

Access to Centralized Windows Applications from your Apple Mac!

The SBC Flagship

HOBLink JWT is our flagship software product for server-based computing (SBC) that provides an intelligent, easy-to-use and more cost efficient alternative to existing approaches like Citrix Metaframe and Tarantella. HOBLink JWT is a non-proprietary software enhancement to Microsoft Windows Terminal Services based on open IT industry standards. Thanks to its flexible architecture, HOBLink JWT is *the* Java-based solution for small and medium-sized companies, large enterprises and application service providers .

Access and Share Windows Applications Installed on:

- ✓ Microsoft Windows NT4 Server (Terminal Server Edition)
- ✓ Windows 2000 Server (Terminal Services)
- ✓ Windows XP Professional
- ✓ Windows 203 Server

Business Benefits

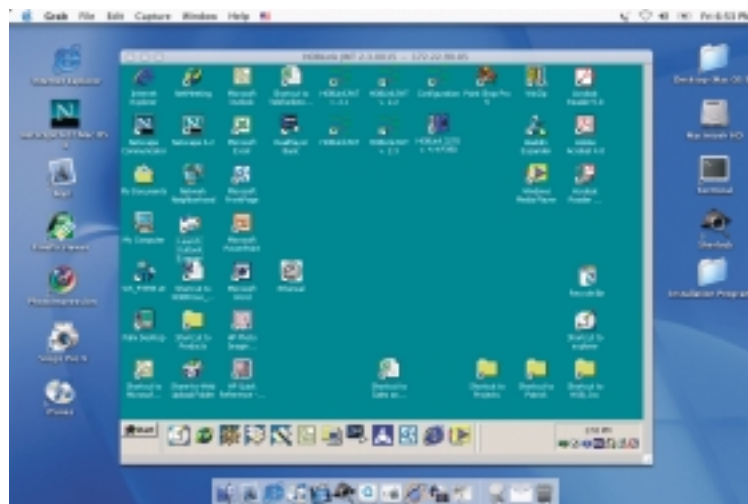
- ✓ Between 30 - 40% less expensive than CITRIX MetaFrame and other approaches
- ✓ Eliminates the burden of complex server components and difficult administration
- ✓ Easy Print capability with only two print drivers and a universal printer support helps to get rid of print hassles and

- ✓ workflow clogs
- ✓ Immediate return on investment due to a maximum of administration transparency
- ✓ A maximum of security with strong encryption based on SSL up to 256-bit*
- ✓ Windows Terminal Server and Web server protection with WebSecure Proxy*
- ✓ Supports third-party solutions for strong client authentication from RSA SecureID and Safeword PremierAccess*
- ✓ Flexible pricing models
- ✓ Reliable and responsive software support

The HOBLink JWT Key Advantages

- ✓ On-demand, multi-user Web access to Windows applications and business-

- critical data located on Windows Terminal Servers from Apple Mac OS.
- ✓ Transparent administration and fast software deployment
- ✓ No local installation necessary neither HOBLink JWT nor the Windows operating system
- ✓ Easy-to-use, only a Web browser is needed
- ✓ Modular software solution with optional add-on components for encryption, application publishing, load balancing and local drive support
- ✓ Supports third-party client authentication solutions from RSA SecureID and Secure Computing Safeword
- ✓ Enables server-based computing for Apple Mac users



Microsoft Windows on Mac OS X. Use Windows centralized Windows applications without installing Windows on your Apple Mac.



* Requires HOBLink Secure, an add-on to HOBLink JWT.



The Ideal Solution for Companies T Shared Windows Applications Anyw

The Key Features

- ✓ Support for Windows and non-Windows platforms
- ✓ Local installation or Web browser as client
- ✓ Client connection is possible via LAN and WAN, dial-up, ISDN, xDSL and VPN (TCP/IP)
- ✓ Flexible print functions, both over the network and locally
- ✓ HOB Enhanced Terminal Services
- ✓ Application Serving – for direct connections to one specific application or desktop
- ✓ Session Shadowing – to view other client sessions
- ✓ Connection to an active or disconnected session
- ✓ Strong security features, such as SOCKS Proxy and HTTP Proxy support, and optional support of RSA Secure ID and Safeword PremierAccess for strong client authentication (in connection with HOBLink Secure).
- ✓ Smart Update – to automatically check for new versions
- ✓ Configurable memory and disk cache
- ✓ Wheelmouse support for Windows or with JVM 1.4

Expand the Value of Your Windows Terminal Services

With the introduction of the Windows Server 2003, Microsoft ex-

panded the RDP protocol's range of functions (RDP 5.2). The numerous new features resulting from this are supported by HOBLink JWT's Enhanced Terminal Services:

- ✓ 8-, 15-, 16-, and 24-bit TrueColor
- ✓ Audio-support
- ✓ Local Drive Mapping
- ✓ Port mapping: Parallel or serial interfaces on the client can be used over the WTS.
- ✓ Load Balancing
- ✓ Application Publishing
- ✓ Local Drive Mapping

Load Balancing

HOBLink JWT's load balancing function allows you to control the load distribution in your Windows Terminal Server farm and get the most performance from your hardware.

Depending on the configuration option chosen, the client either sends a UDP-based request to the Windows Terminal Server farm ("Broadcast"), or, with the "Server list" option, you can specify a certain sub-group of Windows Terminal Servers for the configuration, which can be assigned to a specific department or group in your organization. If desired, you can configure this Server group to deliver only the applications needed by the user groups it serves. Depending on the configuration of "Broadcast" or "Server list," the client is then connected to the first responding server or to the one with the least load. Another setting lets

you display all of the responding servers and a user can then choose a specific one for the connection. If you have installed the optional "**Enhanced Load Balancing**" component, the administrator can even more finely distribute the load, using numerous load measuring criteria, for example: CPU load, swap activity, memory utilization, number of active sessions, network load, etc.

Application Publishing

This feature lets the administrator publish applications centrally from the Windows Terminal Server, making them available to every user.

Local Drive Mapping

Allows you to transfer files between the Windows Terminal Server and the local machine.

Universal Printer Support

- ✓ Printing to local or network printers
- ✓ LPR/LPD printing
- ✓ Printing to a specific IP port
- ✓ Easy Print to locally installed or network printers
- ✓ Automatic printer mapping (under Windows)

That Need to Give MAC Users Access to Where Within their Corporate Network



Easy Print

Is the most intelligent and powerful printing option in HOBLink JWT. With EasyPrint, print data is processed on the Windows Terminal Server in PCL, then it is sent to HOBLink JWT and generated as output on a local or network printer. The benefit is, that only 2 standard PCL printer drivers are necessary on the Windows Terminal Server, instead of installing drivers for all of the local printers attached to every client.

Reconnecting Disconnected Sessions

Client sessions that have been disconnected – e.g. due to network failure – can be reconnected at the point where the interruption occurred.

Application Servicing

With this feature, a specific application can be started automatically at logon. All the user has to do is access this application, instead of getting access to the whole Windows desktop.

Session Shadowing

The administrator can “look in” on an active client session for “remote management” purposes or to give assistance to the user.

Unrestricted Availability

HOBLink JWT is the ideal solution for companies that need to use Windows applications anywhere in their corporate network.

Security

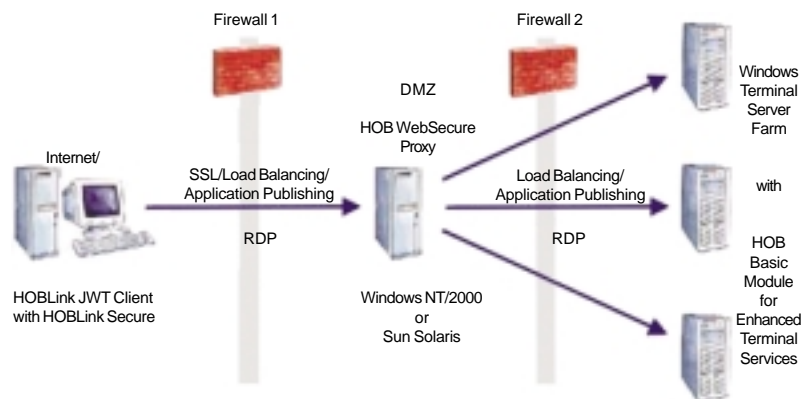
HOBLink JWT can encode all data that is transmitted. It supports the encryption functions for Windows Terminal Servers and HOBLink Secure, an optional add-on solution for a maximum of security.

HOBLink JWT supports the integrated Windows Terminal Server encryption at all levels:

- ✓ “Low” - encryption of data from client to server (RC4), 40-bit or 56-bit
- ✓ “Medium” - encoding of data from client to server and vice versa, (RC4), 40-bit or 56-bit
- ✓ “High” - encryption from client to server and vice versa, (RC4), 128-bit.

A key feature of HOBLink Secure is the Web Secure Proxy, which prevents unauthorized Web access to your Windows Terminal Servers, its application and data. Since many organizations use firewalls to provide extra protection for their Windows Terminal Servers, they usually wish to limit access to the servers by opening just one firewall port. When encryption and load balancing is needed in addition to the RDP session, you must normally open more than one port (UDP, SSL); this opens a sizable security hole in the solution.

The WebSecure Proxy gives you strong data encryption, client authentication, Windows Terminal Server and Web server protection and



For a strong encryption solution, HOBLink Secure is an add-on to HOBLink JWT that provides additional algorithms (RC2, RC4, DES, 3DES and AES). Moreover, a security manager allows you to generate personal certificates to create a public key infrastructure (PKI) for strong client authentication.

load balancing: All with only one open port in your firewall.

To get further information about this SSL3 solution, which provides up to 256-bit encryption and allows for client authentication, [ask your HOB representative for the “HOBLink Secure” data sheet, or visit \[hobsoft.com\]\(http://hobsoft.com\).](#)



Simplified, Multi-user Access to Centralized Windows Applications Located on Windows Terminal Servers

Use HOBLink JWT in Any Heterogeneous Environment

A modern data network consists of a myriad of components, including servers, client PCs, operating systems, LAN protocols and network connection types. For many organizations, it is critical that Windows-based applications are available to all users. A server-based solution that uses HOBLink JWT to access MS Windows Terminal Servers offers your company many distinct advantages:

- ✓ Provides familiar Windows applications to all Mac users
- ✓ Takes maximum advantage of the pre-existing network infrastructure
- ✓ Provides a scalable solution for central installation and management
- ✓ Supports the use of any type of hardware, operating system and network
- ✓ Provides browser-based access to Windows Terminal Servers
- ✓ Requires no additional server components

- ✓ Includes compression of communication data (MPPC protocol) for use in networks with limited bandwidth

Keyboard Layouts

Besides supporting the English keyboard (US and UK), HOBLink JWT includes support for a number of other languages, i.e. German, French, Spanish, Dutch and Portuguese and more.

System Requirements Windows Terminal Server

HOBLink JWT is compatible with:

- ✓ Microsoft Windows NT Server 4.0 (Terminal Server Edition)
- ✓ Microsoft Windows 2000 Server, Advanced Server and Data-center Server with integrated Windows Terminal Services
- ✓ Microsoft Windows XP Professional (1 session)
- ✓ Microsoft Windows Server 2003

Web Server

HOBLink JWT can be installed on any Web server independent of its operating system.

Download your free
evaluation copy today
at hobsoft.com
or call us at 800-399-0990

Client Platforms

HOBLink JWT supports every Java-enabled platform, JDK 1.1 or higher. The only prerequisite on the client is a JVM (Java Virtual Machine). We recommend to use Apple Applet Runner (MRJ) v. 2.2.5. If you have an older version, you can download the latest MRJ from the Apple Web site.

HOBLink JWT runs on Apple Mac OS 8.5 or higher (including Mac OS X).

At least 64 MB RAM should be installed on the client.

Further Information

For more information about HOBLink JWT or the HOB security package, HOBLink Secure, call us at 800-399-0990 or visit our Web site at hobsoft.com.

Visit us at our
World Wide Web site:
<http://www.hobsoft.com>



Information in this document is subject to change without notice. HOB is not liable for any omissions or errors which may be contained in this document. Product information contained herein is from March 2003. Any trademarks included in this document are the property of their owners.

Headquarters Germany
HOB GmbH & Co. KG
Schwadermuehlstr. 3
90556 Cadolzburg
Germany
E-mail: marketing@hob.de
Phone +49-9103-715-0
Fax +49-9103-715-271

U.S.A.
HOB, Inc. (by SDS)
5155 East River Road
Minneapolis, MN 55421
USA
E-mail: info@hobsoft.com
Phone +1-800-399-0990
or +1-763-571-9000
Fax +1-763-572-1721

Benelux
HOB Electronic Benelux BV
Geldropseweg 191 B
5613 LM Eindhoven
The Netherlands
E-mail: info@hob.nl
Phone +31-40-294-59-99
Fax +31-40-294-59-98

HOB international:
Eindhoven
Malta
Minneapolis
New York
Paris
Sydney
Vienna

HOB is certified

